

Wakulla County
Board of County Commissioners
Fiscal Year 2007/2008
Tentative Budget
and Capital Improvement
Program

**Fiscal Year 2007/2008
Tentative Budget and
Capital Improvement Program**

Board of County Commissioners
Brain Langston, Chairman, District 1
George Green, District 2
Ed Brimmer, District 3
Howard Kessler, District 4
Maxie Lawhon, District 5

Benjamin H. Pingree, County Administrator



Wakulla County Commission Complex
3093 Crawfordville Highway
Crawfordville, FL 32327

www.mywakulla.com

Wakulla County, Florida Board of County Commissioners



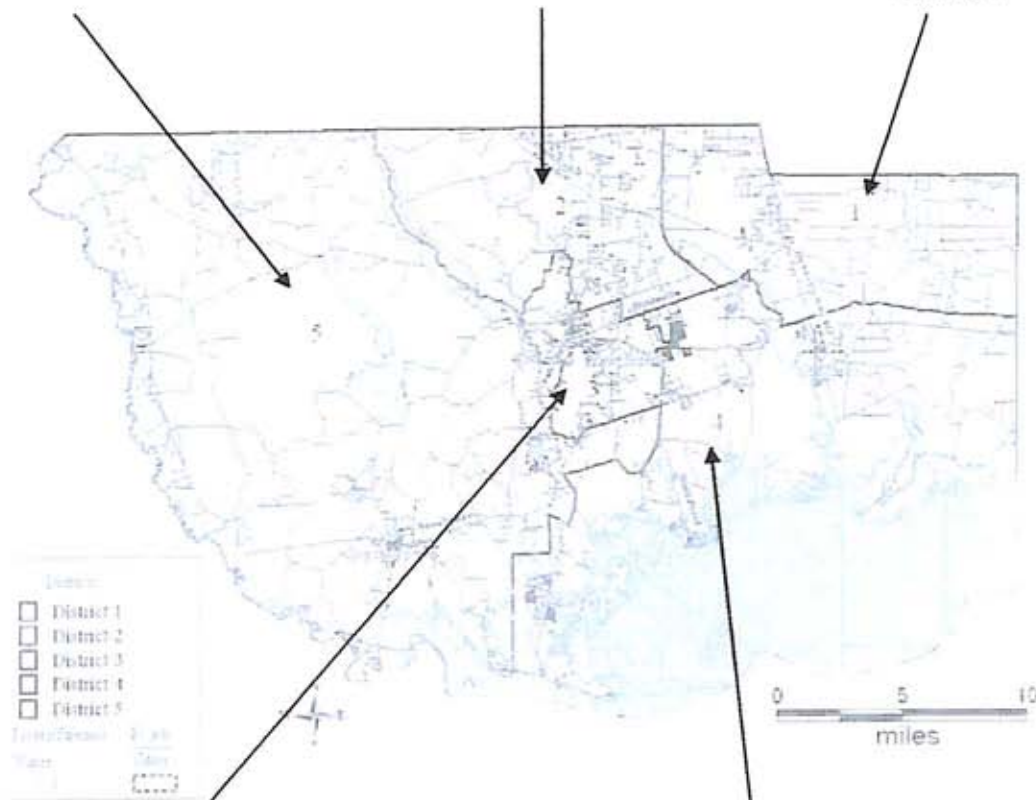
Maxie Lawhon
District 5



George Green
District 2



Brian Langston
District 1



Ed Brimmer
District 3



Howard Kessler
District 4

**Wakulla County
Board of County Commissioners**

Benjamin H. Pingree, County Administrator

Timothy Barden, Director, Office of
Management & Budget

Budget & Finance Committee

Benjamin H. Pingree, County Administrator
Andrea Simpson, Deputy County Administrator
Greg James, Chief Deputy Clerk
Timothy Barden, Director, Office of
Management & Budget
Colleen Skipper, Budget Analyst



Wakulla County
Board of County Commissioners
2007 Priorities

Board of County Commissioners

Brain Langston, Chairman, District 1

George Green, District 2

Ed Brimmer, District 3

Howard Kessler, District 4

Maxie Lawhon, District 5

**2. *Comprehensive Plan
Improvements***

This priority issue includes completing an Evaluation Appraisal Report, reorganizing Planning staff to expedite community development planning issues, review Planning Department's fee schedule and recommend improvements to Comprehensive Plan, including ongoing visioning plans and development.

4. *Economic Development*

This priority issue identifies and pursues regional partnerships to expand economic growth within Wakulla County, continues partnerships with the Chamber of Commerce and Economic Development Council towards attracting jobs to the region, works with School Board, TCC and Workforce Plus to develop human resources and seeks to expand awareness of County's economic development tools.

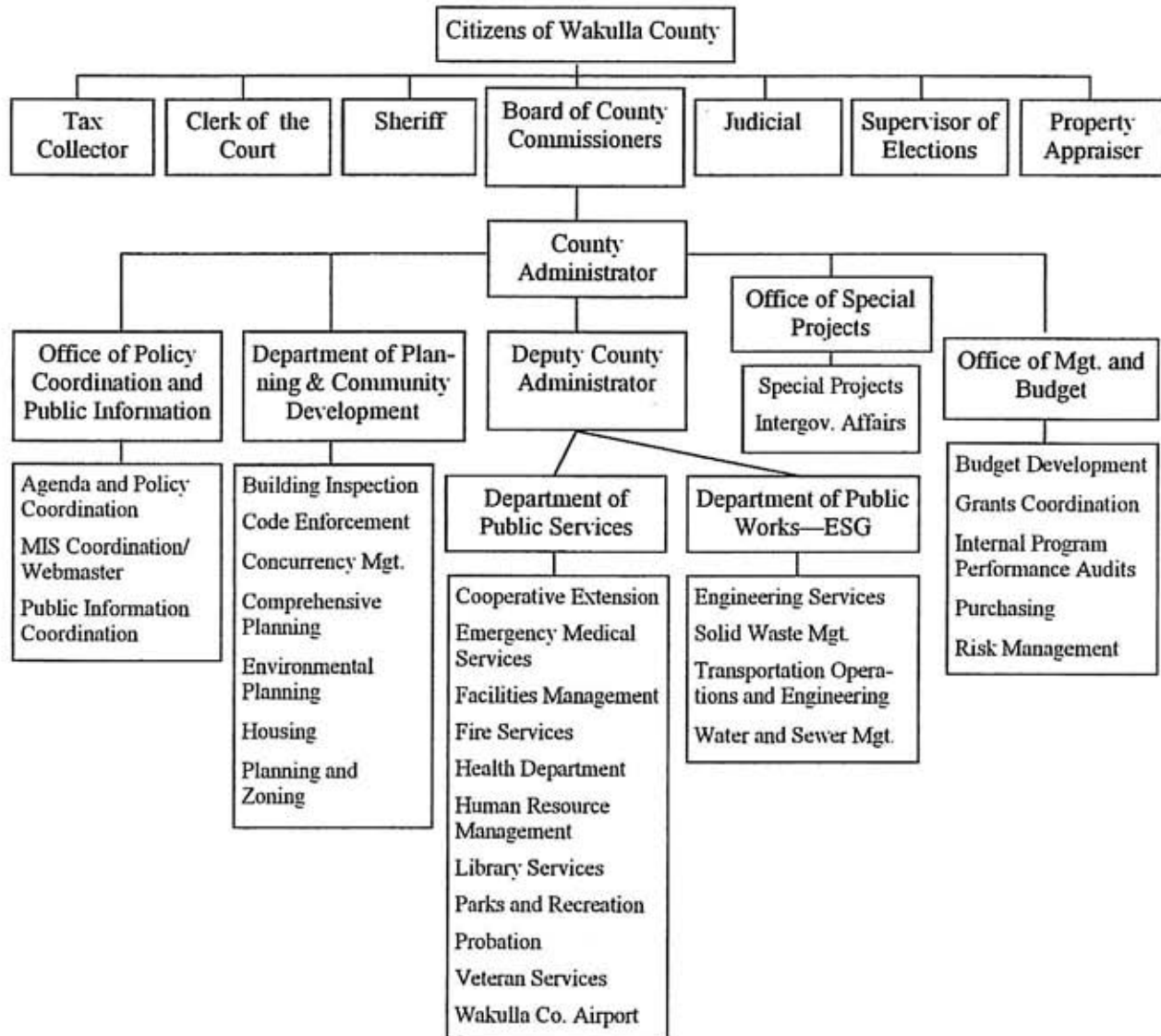
**1. *Transportation Planning and
Improvements***

This priority issue includes completing a concurrency management system for the County, developing ordinances to define how developers pay for proportionate fair share, seeking Legislative funding for the widening of Highway 319 and identifying and planning for alternative north/south transportation corridors.

**3. *Sewer and Water System
Expansion and Solid Waste
Management Improvements***

This priority issue pursues the implementation of sewer expansion to Wakulla Gardens, improve coordination of sewer and water with all providers, prepares a centralized billing and collections center for all sewer and water and pursues a policy to implement legal requirements that property owners adjacent to existing sewer must tie onto the sewer system, and a review of the County's existing solid waste services.

Wakulla County Government Fiscal Year 2007/2008 Budget



Wakulla County is approximately 607 square miles. It has a population of an estimated 29,542 people, with 97% living in the unincorporated area of the County, and 3% within the City limits.

The County, a political subdivision of the State of Florida, is guided by an elected five-member Board of County Commissioners, each elected to serve specific districts. Florida Statutes, Chapter 125 establishes the powers and duties of the County Commission and the County Administrator.

Other elected officials of Wakulla County include the Judiciary, State Attorney, Public Defender and five Constitutional Officers: the Clerk of the Court, the Property Appraiser, the Sheriff, the Supervisor of Elections, and the Tax Collector.



WAKULLA COUNTY POSITION LISTING FY 2007/2008

Payroll Department	Position Title	
Airport		
Airport	<i>position moved from County Admin</i>	
Department Total:		1
Ambulance		
G/F Ambulance Dept	EMT	
G/F Ambulance Dept	EMT	
Ambulance-Regular	Director of Emergency Medical Services	
G/F Ambulance Dept	Paramedic	
G/F Ambulance Dept	Administrative Assistant - EMS	
G/F Ambulance Dept	On-Call Paramedic	
G/F Ambulance Dept	EMT	
G/F Ambulance Dept	EMT	
G/F Ambulance Dept	EMT	
Ambulance-Regular	Medical Director	
G/F Ambulance Dept	EMT	
G/F Ambulance Dept	Paramedic	
G/F Ambulance Dept	EMT	
G/F Ambulance Dept	Paramedic	
G/F Ambulance Dept	EMT	
G/F Ambulance Dept	Paramedic	
G/F Ambulance Dept	Supervisor	
G/F Ambulance Dept	Paramedic	
G/F Ambulance Dept	Paramedic	
G/F Ambulance Dept	Paramedic	
G/F Ambulance Dept	EMT	
G/F Ambulance Dept	On-Call Paramedic	
G/F Ambulance Dept	EMT	
G/F Ambulance Dept OPS	EMT	
G/F Ambulance Dept OPS	On-Call Paramedic	
G/F Ambulance Dept OPS	On-Call Paramedic	
G/F Ambulance Dept OPS	EMT	
G/F Ambulance Dept OPS	Paramedic	
G/F Ambulance Dept OPS	EMT	
G/F Ambulance Dept OPS	Paramedic	
G/F Ambulance Dept OPS	On-Call Paramedic	
G/F Ambulance Dept OPS	Paramedic	
G/F Ambulance Dept OPS	On-Call Paramedic	
G/F Ambulance Dept OPS	EMT	
G/F Ambulance Dept OPS	On-Call Paramedic	
G/F Ambulance Dept OPS	On-Call Paramedic	
G/F Ambulance Dept OPS	On-Call Paramedic	
G/F Ambulance Dept OPS	On-Call EMT	
G/F Ambulance Dept OPS	On-Call EMT	
Department Total:		39



WAKULLA COUNTY POSITION LISTING FY 2007/2008

Payroll Department	Position Title	
Board of Commissioners		
BOCC-Elected Official	Commissioner	
BOCC-Elected Official	Commissioner	
BOCC-Elected Official	Commissioner	
BOCC-Elected Official	Commissioner	
BOCC-Elected Official	Commissioner	
Department Total:		5
Building		
Building Dept.-Regular	Building Tech II	
Building Dept.-Regular	Building Tech II	
<i>Building Dept.-Regular</i>	<i>Vacant</i>	
Building Dept.-Regular	Building Tech I	
Building Dept.-Regular	Building Inspector	
Building Dept.-Regular	Chief Building Inspector	
Building Dept.-Regular	Building Inspector	
Building Dept.-Regular	Building and Fire Official	
Building Dept.-OPS	OPS- Building Inspector	
Building Dept.-Regular	Deputy Building Inspector - Temporary	
Building Dept.-Regular	Plans Review Inspector	
Building Dept.-Regular	Inspector Assistant	
Building Dept.-OPS	OPS	
Department Total:		13
Code Enforcement		
Code Enforcement	Code Enforcement Officer	
Department Total:		1
County Administrator		
County Administrator	Executive Assistant to the County Administrator	
County Administrator	County Administrator	
County Administrator	Director of Special Projects	
County Administrator	Deputy County Administrator	
County Administrator	Policy and Public Info Coord.	
County Administrator	<i>Moving to Airport budget</i>	
Department Total:		5
Extension Service/Agriculture		
Agriculture-Regular	Family and Consumer Sciences Extension Agent	
Agriculture-Regular	Extension Director	
Agriculture-Regular	Extension Agent I (4H/Youth Development)	
Agriculture-Regular	Extension Office Manager	
Agriculture-Regular	Office Assistant	
Department Total:		5
Facilities Management		
Maintenance-regular	Building Maintenance Supervisor	
Maintenance/OPS	OPS/Maintenance-Tech	
Department Total:		2



WAKULLA COUNTY POSITION LISTING FY 2007/2008

Payroll Department	Position Title	
Fire Services		
G/F Firefighters Dept	Fire Chief	
G/F Firefighters Dept	Firefighter	
G/F Firefighters Dept	Firefighter	
G/F Firefighters Dept	Firefighter	
G/F Firefighters Dept	Firefighter	
G/F Firefighters Dept	Firefighter	
G/F Firefighters Dept	Firefighter	
Department Total:		7
Housing		
Housing	Housing Director	
Housing	Assist. Housing Director	
Housing	Part-time Office Assistant	
Housing	Section 8 Coordinator	
Housing	Weatherization Coord.	
Department Total:		5
Library		
Library-Regular	Lib. Asst. I-Circulation	
Library-regular	Library Director	
Library-Regular	Lib. Asst. II-Cataloger	
Library-Regular	Lib. Asst. I-Circulation	
Library-Regular	Lib. Asst. I-Circulation	
OPS Library - State funded	OPS-Lib Asst. I-Youth	
Library-State funded	Lifelong Learning Coord.	
Department Total:		7
Management & Budget		
OMB (Mgmt & Budget)	OMB Director	
OMB (Mgmt & Budget)	Grants Coordinator	
OMB (Mgmt & Budget)	Budget Analyst	
Department Total:		3
Parks and Recreation		
Recreation Dept.-Regular	Office Assistant	
Recreation Dept.-regular	Director of Parks and Recreation	
Recreation Dept.-regular	Asst.Park & Rec Director	
Recreation Dept.-Regular	Maintenance -Parks and Rec.	
Recreation Dept.-Regular	Maintenance -Parks and Rec.	
Recreation Dept-OPS	OPS-Grounds	
Recreation Dept-OPS	OPS-Grounds	
Recreation Dept-OPS	OPS-Grounds	
Parks	OPS/Clerical	
Parks	OPS/Clerical	
Parks	Office Assistant	
Parks	Parks Facilities Coordinator	
Parks OPS	OPS-Grounds	
Parks Activity-OPS	Camp Counselor	
Parks Activity-OPS	Camp Counselor	



WAKULLA COUNTY POSITION LISTING FY 2007/2008

Payroll Department	Position Title	
Parks Activity-OPS	Camp Counselor	
Parks Activity-OPS	Camp Counselor	
Parks Activity-OPS	Camp Counselor	
Parks Activity-OPS	Summer Bus Driver	
Department Total:		19
Planning and Zoning		
Planning & Zoning-Regular	Department Director	
Planning & Zoning-Regular	Planner-II	
Planning & Zoning-Regular	Planning Tech I	
Planning & Zoning-Regular	Cartographer	
Planning & Zoning-Regular	Planning Tech II	
Planning & Zoning-Regular	GIS Specialist	
Planning & Zoning-OPS	OPS/Specialist	
Department Total:		7
Probation		
Probation Dept.-regular	Probation Director	
Probation Dept.-regular	Probation Officer-II	
Probation Dept.-Regular	Secretary/Fical Assist.	
Probation Dept.-Regular	Probation Officer-I	
Department Total:		4
Roads Department		
Road Department	Right-Away Acquisition Agent	
Department Total:		1
Solid Waste		
Recycling Grant S/W	Recycling Coordinator	
Department Total:		1
Veterans Services		
Veterans Svc.-regular	Veteran Services Officer	
Department Total:		1
BOCC Total:		126
Constitutional Officers		
Clerk of Court		
Clerk of Court	Clerk of Court	
Clerk of Court	Asst.Supervisor Criminal	
Clerk of Court	Finance	
Clerk of Court	Technology Information	
Clerk of Court	Finance BOCC A/P & Payroll	
Clerk of Court	Criminal Court Supervisor	
Clerk of Court	Maintenance Supervisor	
Clerk of Court	Circuit Civil	
Clerk of Court	Criminal Clerk	
Clerk of Court	Clerk A/P & Payroll	



WAKULLA COUNTY POSITION LISTING FY 2007/2008

Payroll Department	Position Title	
Clerk of Court	Assist. Finance Director	
Clerk of Court	Misdemeanor Clerk	
Clerk of Court	Chief-Deputy Clerk & Finance Director	
Clerk of Court	Official Records Clerk	
Clerk of Court	Traffic Clerk	
Clerk of Court	Felony/Appeals	
Clerk of Court	Child Support Clerk	
Clerk of Court	Felony/Appeals Clerk	
Clerk of Court	Finance Clerk & Board Payroll	
Clerk of Court	County Court / Probate Clerk	
Clerk of Court	Assist. Supervisor Official Records	
Clerk of Court	Finance Director	
Clerk of Court	Administrative Assist To Clerk	
Clerk of Court	Official Records/Reception Clerk	
Clerk of Court	Official Records Supervisor	
Clerk of Court	Superv.Circuit Civil & Jury	
Clerk of Court	Misdemeanor Clerk	
Department Total:		27
Court Admin User Analyst		
Court Admin Office	ICSID	
Court Admin Office	Court Administrator	
Department Total:		2
County Judge		
Ops-County Judge	Judge	
Ops-County Judge	Judge	
Ops-County Judge	Judge	
Ops-County Judge	Judge	
Ops-County Judge	Judge	
Ops-County Judge	Judge	
Ops-County Judge	Judge	
Ops-County Judge	Judge	
Department Total:		8
Property Appraiser		
Department Total:		15
Sheriff's Department		
Sheriff's Office	County Sheriff	
Sheriff's Office	Undersheriff	
Sheriff's Office	Major Community Services	
Sheriff's Office	Major Corrections	
Sheriff's Office	Major Law Enforcement Services	
Sheriff's Office	Director Of Administrative Services	
Sheriff's Office	Director Of Emergency Management	
Sheriff's Office	Director Of Finance	
Sheriff's Office	Captain Administrative Services	
Sheriff's Office	Captain Animal & Litter Control	
Sheriff's Office	Captain Criminal Investigations	



WAKULLA COUNTY POSITION LISTING FY 2007/2008

Payroll Department	Position Title
Sheriff's Office	Corrections Officer
Sheriff's Office	Corrections Officer
Sheriff's Office	Corrections Officer
Sheriff's Office	Corrections Officer
Sheriff's Office	Corrections Officer
Sheriff's Office	Corrections Officer
Sheriff's Office	Corrections Officer
Sheriff's Office	Corrections Officer
Sheriff's Office	Corrections Officer
Sheriff's Office	Corrections Officer
Sheriff's Office	Corrections Officer
Sheriff's Office	Corrections Officer
Sheriff's Office	Corrections Officer
Sheriff's Office	Corrections Officer
Sheriff's Office	Corrections Officer
Sheriff's Office	Corrections Officer Litter Control
Sheriff's Office	Corrections Officer Transportation
Sheriff's Office	Corrections Officer Transportation
Sheriff's Office	Deputy Sheriff-Court House Security
Sheriff's Office	Deputy Sheriff-Court House Security
Sheriff's Office	Deputy Sheriff-Crime Scene Investigator
Sheriff's Office	Deputy Sheriff- Detective
Sheriff's Office	Deputy Sheriff- Detective
Sheriff's Office	Deputy Sheriff- Detective
Sheriff's Office	Deputy Sheriff- Detective
Sheriff's Office	Deputy Sheriff- Detective
Sheriff's Office	Deputy Sheriff- Detective
Sheriff's Office	Deputy Sheriff- K9
Sheriff's Office	Deputy Sheriff- Marine Unit
Sheriff's Office	Deputy Sheriff Narcotics
Sheriff's Office	Deputy Sheriff Narcotics
Sheriff's Office	Deputy Sheriff - RP
Sheriff's Office	Deputy Sheriff - RP
Sheriff's Office	Deputy Sheriff - RP
Sheriff's Office	Deputy Sheriff - RP
Sheriff's Office	Deputy Sheriff - RP
Sheriff's Office	Deputy Sheriff - RP
Sheriff's Office	Deputy Sheriff - RP
Sheriff's Office	Deputy Sheriff - RP
Sheriff's Office	Deputy Sheriff - RP
Sheriff's Office	Deputy Sheriff - RP
Sheriff's Office	Deputy Sheriff - RP
Sheriff's Office	Deputy Sheriff - RP
Sheriff's Office	Deputy Sheriff - RP
Sheriff's Office	Deputy Sheriff - RP
Sheriff's Office	Deputy Sheriff - SRO
Sheriff's Office	Deputy Sheriff - SRO
Sheriff's Office	Deputy Sheriff - SRO
Sheriff's Office	Deputy Sheriff - Traffic
Sheriff's Office	Deputy Sheriff - Transportation



WAKULLA COUNTY POSITION LISTING FY 2007/2008

Payroll Department	Position Title
Sheriff's Office	Deputy Sheriff - Warrants
Sheriff's Office	Animal Control Officer - Civilian
Sheriff's Office	Animal Control Officer - Civilian
Sheriff's Office	Animal Control Security - Civilian
Sheriff's Office	Animal Control Supervisor - Civilian
Sheriff's Office	Automated Services - Civilian
Sheriff's Office	Building/Fleet Supervisor - Civilian
Sheriff's Office	Communications Officer - Civilian
Sheriff's Office	Communications Officer - Civilian
Sheriff's Office	Communications Officer - Civilian
Sheriff's Office	Communications Officer - Civilian
Sheriff's Office	Communications Officer - Civilian
Sheriff's Office	Communications Officer - Civilian
Sheriff's Office	Communications Officer - Civilian
Sheriff's Office	Commun.Officer Supervisor - Civilian
Sheriff's Office	Corrections Assistant - Civilian
Sheriff's Office	Corrections Assistant - Civilian
Sheriff's Office	Corrections Assistant - Civilian
Sheriff's Office	Corrections Assistant - Civilian
Sheriff's Office	Corrections Assistant - Civilian
Sheriff's Office	Corrections Assistant - Civilian
Sheriff's Office	Corrections Assistant - Civilian
Sheriff's Office	Corrections Assistant - Civilian
Sheriff's Office	Corrections Assistant - Civilian
Sheriff's Office	Corrections Assist. Food Service- Civilian
Sheriff's Office	Corrections Assist. Park & Rec-Civilian
Sheriff's Office	Crime Scene Investigator - Civilian
Sheriff's Office	E-911 Coordinator - Civilian
Sheriff's Office	Evidence/Property - Civilian
Sheriff's Office	Executive Assistant - Civilian
Sheriff's Office	Finance Accounts Payable - Civilian
Sheriff's Office	Finance Payroll Clerk - Civilian
Sheriff's Office	Human Resource Assistant - Civilian
Sheriff's Office	Maintenance - Civilian
Sheriff's Office	Mechanic - Civilian
Sheriff's Office	Medical Secretary - Civilian
Sheriff's Office	Nurse LPN - Civilian
Sheriff's Office	Nurse LPN - Civilian
Sheriff's Office	Nurse LPN - Civilian
Sheriff's Office	Nurse LPN - Civilian
Sheriff's Office	Nurse-Paramedic - Civilian
Sheriff's Office	Purchasing Agent / Grant -Civilian
Sheriff's Office	Purchasing Clerk - Civilian
Sheriff's Office	Receptionist/PT 1 Morning 1 Afternoon
Sheriff's Office	Records Clerk - Civilian
Sheriff's Office	Records Clerk - Civilian
Sheriff's Office	Victim Advocate - Civilian
Sheriff's Office	Victim Advocate - Civilian
Sheriff's Office	Warrants Clerk - Civilian
Department Total:	FY2007/2008

163



WAKULLA COUNTY POSITION LISTING FY 2007/2008

Payroll Department	Position Title	
Supervisor Of Elections		
County Election Office	Supervisor Of Elections	
County Election Office	Deputy Supervisor	
County Election Office	Deputy Supervisor	
County Election Office	Maintenance/OPS	
County Election Office	Assist. Supervisor	
Department Total:		5
Tax Collector		
Tax Collector	Tax Collector	
Tax Collector	Assist. Tax Collector	
Tax Collector	Bookeeping/Mtg.Rev	
Tax Collector	Service Supervisor	
Tax Collector	Sr.Rev.Clerk	
Tax Collector	Rev. Clerk	
Tax Collector	Rev. Clerk	
Tax Collector	Rev. Clerk	
Tax Collector	Rev. Clerk	
Tax Collector	Temp/Office Help	
Tax Collector	Rev. Clerk	
Department Total:		11
Constitutional Officers Total:		231
County Total:		357
ESG Positions		31
TOTAL ALL POSITIONS		388