



BOARD OF COUNTY COMMISSIONERS
WAKULLA COUNTY, FLORIDA

ADDENDUM #2
BID NO. 2010-05

Issue Date: October 8, 2010

Project: WAKULLA COUNTY
SANITARY FORCE MAIN

Notice to all bidders is hereby given that the following modifications and clarifications are made to the Request for Bids referenced above. The modifications and clarifications made under Addendum #2 are summarized below:

1. Revisions to plans/specs.
2. RFI's and answers.
3. Revised plan sheet 45.
4. Bid Tabulation in MS Excel format.

Each Bid submitted in response to this Advertisement for Bids shall include an acknowledgment of this Addendum.

EUTAW UTILITIES, INC.

Project Development...Concept to Completion



Date: October 8, 2010

**To: Wakulla County Sanitary Force Main
Pre-Bid Meeting Attendees**

From: Matt Hurd

RE: Addendum #2

Revisions to Plans and Specs:

1. The total dynamic head for Lift Station #2 should be 65 feet instead of 57 feet. Please see updated plan sheet 45.
2. AWWA C900-2007 rates DR-25 PVC pipe at greater than 150 psi. Therefore, DR-25 PVC will be allowed for this project as long as it meets or exceeds the 150 psi pressure class.
3. To ensure material quality, all PVC pipe must be manufactured no more than six months prior to delivery to project site.

Requests for Information and Answers:

1. What type of testing is required in Bid Item 3.3?

Bid Item 3.3 covers all testing as required in Spec Section 02120 (Earthwork) and Spec Section 02121 (Trench Excavation & Backfill).

2. Regarding article 17-MBE/WBE goal of 9 and 3% respectively, what agencies are allowed such as FDOT, SEB etc? Can materials be purchased through acceptable agencies and can 100% of purchase be counted toward goals??

The MBE/WBE suppliers or subcontractors will need to be certified as MBE/WBE through the Florida Department of Management Services, found at www.myfloridamarketplace.com. MBE/WBE participation can be in the form of goods or services, with the cost of goods purchased from a qualifying MBE/WBE being their participation on the project.

3. What are the pipe restraining requirements at directional bore locations.

PVC pipe shall be restrained for three joints on either side of a directional bore.

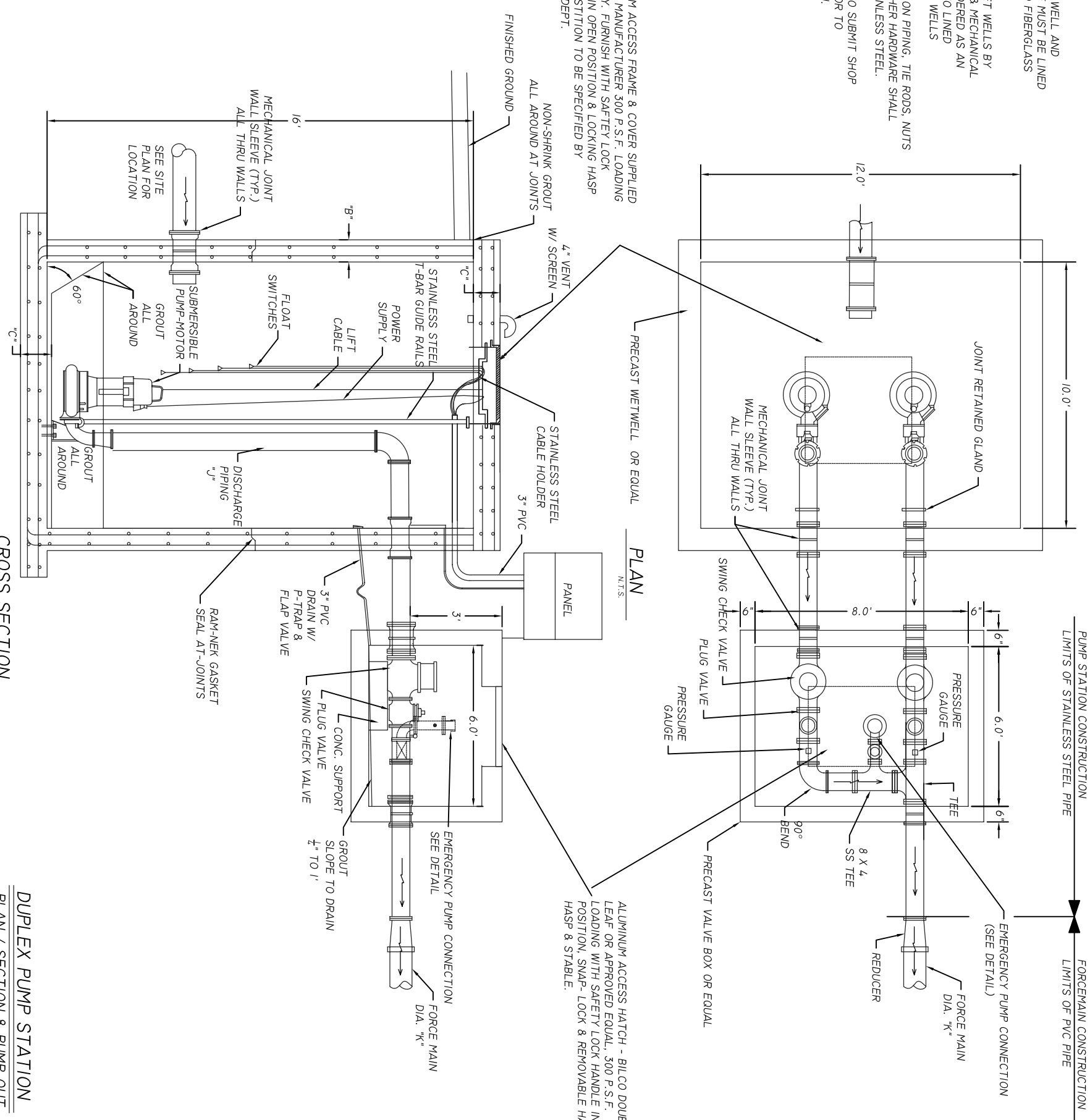
4. Please provide a specification for the lights and poles at lift stations?

Light: American Electric Catalogue #L10H (100W, 120V, high pressure sodium) or approved equal.

Pole: 25' Class 5 Pentachlorophenol treated Yellow Pine, buried 4.5'.

- NOTES:
- 1) CONCRETE WET WELL AND FIRST MANHOLE MUST BE LINED WITH APPROVED FIBERGLASS COATING.
 - 2) FIBERGLASS WET WELLS BY GILBERT PUMP & MECHANICAL WILL BE CONSIDERED AS AN ALTERNATIVE TO LINED CONCRETE WET WELLS
 - 3) ALL LIFT STATION PIPING, TIE RODS, NUTS BOLTS, AND OTHER HARDWARE SHALL BE SS 316, STAINLESS STEEL.
 - 4) CONTRACTOR TO SUBMIT SHOP DRAWINGS PRIOR TO CONSTRUCTION.

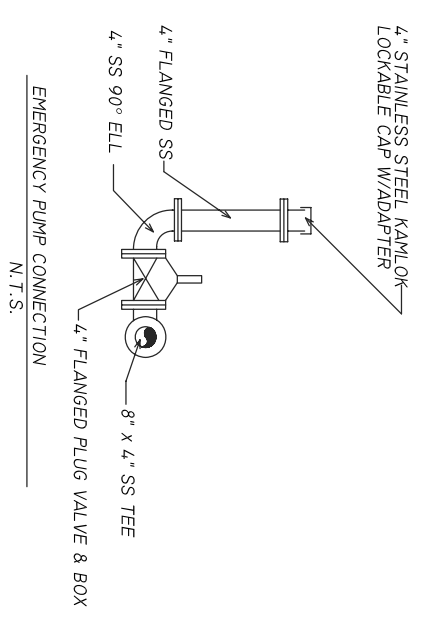
ALUMINUM ACCESS FRAME & COVER SUPPLIED BY PUMP MANUFACTURER 300 P.S.F. LOADING CAPACITY. FURNISH WITH SAFETY LOCK HANDLE IN OPEN POSITION & LOCKING HASP OPEN POSITION TO BE SPECIFIED BY UTILITY DEPT.



CROSS SECTION
N.T.S.

DUPLEX PUMP STATION
PLAN / SECTION & PUMP-OUT
N.T.S.

SCHEDULE	
WET WELL DIMS.	10' X 12'
WALL THICKNESS "B"	10"
SLAB THICKNESS "C"	16"
VALVE BOX DIM.	8' X 6'
GROUND ELEVATION	12'
HATCH OPENING DIM.	4.8' X 4.8'
DISCHARGE PIPE DIAM "J"	8"
FORCE MAIN DIA. "K"	10"
INFLOW PIPE DIAM.	10"
INFLOW PIPE INV. ELEVATION	1.79'
BOTTOM SLAB ELEVATION	-4'
PUMP CAPACITY - G.P.M.	620
TOTAL DYNAMIC HEAD - FT.	65
R.P.M.	1750
MOTOR HORSEPOWER	20
HIGH WATER ALARM ELEVATION	2'
SECOND PUMP ON AT ELEVATION	1'
FIRST PUMP ON AT ELEVATION	0
LOW WATER PUMPS OFF AT ELEVATION	-3
PUMP DESCRIPTION	SUBMERSIBLE NON-CLOG
PUMP AND EQUIPMENT	PUMP STATION #2



EMERGENCY PUMP CONNECTION
N.T.S.

WAKULLA COUNTY FORCE MAIN LINE
LIFT STATION DETAILS

WAKULLA COUNTY, FLORIDA

EUTAW UTILITIES, INC.
Project Development...Concept to Completion
415 SAINT FRANCIS ST. UNIT 114 OFFICE PHONE: (850) 383-0400
TALLAHASSEE, FLORIDA 32301 OFFICE FAX: (888) 878-2939

NO.	DATE	REVISION/ACTION TAKEN	DESIGN ENGINEER:
1	10/7/10	CHANGED TOTAL DYNAMIC HEAD VALUE	RAYMOND N. CHASE
			SIGNATURE:
			P. E. NUMBER:
			PRINT DATE:
			08 OCT 2010
			DRAWN BY: DATE: SCALE:
			MWH 20FEB09 AS SHOWN
			CHECKED BY: DATE:
			RMC 20FEB09