

**TASK ASSIGNMENT  
WAKULLA COUNTY  
OCHLOCKONEE BAY BIKE TRAIL, PHASE I  
Task Order**

**Project Overview**

In accordance with that certain Professional Services Agreement by and between Wakulla County, Florida, and THE LPA GROUP INCORPORATED, dated as of January 21, 2003, and subsequently amended agreements dated December 4, 2006 and August 4, 2008, THE LPA GROUP INCORPORATED, is providing a scope of services and budget for the planning, engineering design, and environmental compliance for the 2.3 mile segment of the Ochlockonee Bay Trail along Surf Road (CR 375) from Mash Island Park to a point just east of the end of Tide Creek Bridge in Wakulla County. This is part of an 11.7 mile trail to be constructed and maintained by Wakulla County from Mash Island Park to Hwy US 319 at Sopchoppy, FL.

THE LPA GROUP INCORPORATED, herein referred to as the **CONSULTANT**, shall provide engineering services for the project for Wakulla County, herein referred to as the **OWNER**. Engineering services are outlined in this document and divided into two sections. **SECTION A**, entitled **SCOPE OF SERVICES**, includes a breakdown of the engineering and construction tasks. **SECTION B**, entitled **ENGINEERING FEE**, provides the line item cost for the services outlined in this document. A schedule for delivery of services is also included. Services shall be provided as a lump sum fee of \$77,589.00, as provided in Section B. All subconsultants shall be approved by the County in advance.

The design will follow the attached Phase I of the "Conceptual Master Plan" prepared for the Ochlockonee Bay Bike Trail dated May 10, 2002.

All services shall be provided with the schedule attached hereto as Exhibit A and incorporated herein by reference.

**END OF SECTION**

BY: \_\_\_\_\_  
Benjamin H. Pingree, County Administrator  
Wakulla County

DATE: \_\_\_\_\_

BY: \_\_\_\_\_  
Paul C Holt, RCGO Senior Vice President  
THE LPA GROUP INCORPORATED

DATE: \_\_\_\_\_

**SECTION A**  
**SCOPE OF SERVICES**  
**Ochlockonee Bay Bike Trail, Phase I**

**Task 1. Environmental Memorandum & Permitting**

- 1.1 Memorandum:** The **CONSULTANT** intends to use a sub-consultant to prepare an Environmental Memorandum to address the issues of threatened & endangered (T&E) species and wetlands. A field review by a qualified biologist will be performed to identify any T&E Species. The wetlands will be delineated by Pope Environmental Services, Inc. and surveyed under Task 2.
- 1.2 Permitting:** The **CONSULTANT** intends to use Pope Environmental Services, Inc, as a sub-consultant to quantify all impacts resulting from the design of the bike trail and prepare and submit all required environmental permits required for construction. It shall be the **CONSULTANT's** responsibility for payment of any required mitigation and permit fee(s) associated with environmental permitting.

**Task 2. Field Surveys**

The **CONSULTANT** intends to use a sub-consultant to perform all field surveys.

- 2.1 Design Surveys:** Topographic survey will be performed for the entire roadway right-of-way for the entire approximate length of 2.3 miles. The road will be cross-sectioned at 100' intervals. Ground features will be located including centerline, edge of pavement, top of ditch, bottom of ditch, back of slope, driveways, and existing drainage features by identifying size and invert elevations. In areas of reverse drainage on roadways, the edge of pavement of the opposite side of the road will be located. Above ground utilities and buried utilities, as marked/provided by the locator service or utility company, shall be surveyed. Trees located within the right-of-way that are eight inches to twelve inches in diameter at breast height or above will be located. Additionally, wetlands identified by Pope Environmental Services, Inc. as outlined in Task 1 will be surveyed and included in the topographic file. A topographic map will be prepared showing spot elevations, right-of-way, wetlands, trees and pipe inverts.

**Task 3. Preliminary Design**

- 3.1 Preliminary Bike Trail Plans:** The **CONSULTANT** shall prepare a set of plans depicting the existing features collected from field surveys, existing roadway, proposed improvements, typical sections, and preliminary drainage design.

Upon completion of the preliminary plans, the **CONSULTANT** will submit one (1) set of 11x17 prints to the **OWNER** and the Florida Department of Transportation for their review and approval.

**Task 4. Final Design**

- 4.1 Final Bike Trail Design and Plans:** Based on the approved preliminary bike trail design plans, the **CONSULTANT** shall develop final bike trail construction plans. The design shall be in accordance with the following publications:
- Florida Department of Transportation's Bicycle Facilities Planning and Design Manual
  - Florida Department of Transportation's Florida Pedestrian Safety Plan
  - Florida Department of Transportation's Standard Specifications for Road and Bridge Construction and supplements
  - Guide for Development of Bicycle Facilities, American Association of State Highway and Transportation Officials (AASHTO).
- 4.2** All necessary design data will be incorporated into the design plans. Cross sections at an interval of 100 feet will be shown with the proposed bike trail section. Construction limits will be shown on the plans. Earthwork shall be quantified and shown on the profile sheet.
- 4.3 Storm Drainage, Hydrological Analyses:** The **CONSULTANT** will modify the existing storm drainage to incorporate the new design.
- 4.4 Traffic Control/Construction Staging:** The **CONSULTANT** will include traffic control/construction staging plans in the final construction plans.
- 4.5 Erosion Control Details:** Erosion control standards and details conforming to FDOT requirements will be shown on the construction plans, if required (Silt fence, check dams, sediment ponds, hay bales, etc.). An erosion control detail sheet will be provided.
- 4.6 Quantities and Cost Estimate:** The **CONSULTANT** shall prepare the final quantities based upon the final plans. Quantity computations will be performed for each item of work designated as unit price pay items. Computations will be tabulated in the quantity summaries on the final plans. Unit prices of recent roadway projects in the area will be used to develop a final engineer's cost of construction estimate.
- 4.7 Bid Package/Specifications:** The **CONSULTANT** shall prepare a specification package in accordance with the FDOT and/or Town/County's Standard Specifications.

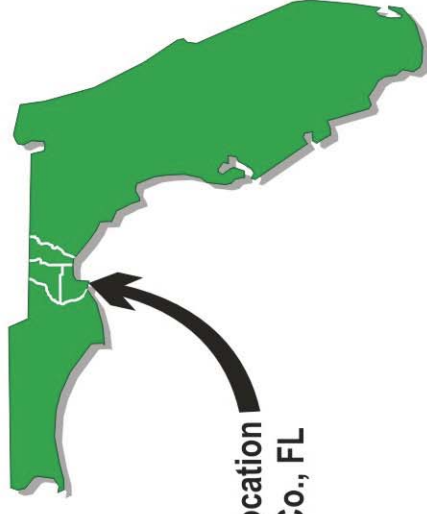
One (1) copy of the final bike trail construction plans and specifications will be provided to the **OWNER** and the Florida Department of Transportation for their review and approval.

**END OF SECTION**

**SECTION B**  
**SUPPLEMENTAL ENGINEERING FEE**  
**Ochlockonee Bay Bike Trail, Phase I**

**Lump Sum Fee**

**\$77,589.00**



**Project Location**  
Wakulla Co., FL

- Phase I** - Tide Creek to Mashes Island Boat Launch
- Phase II** - National Wildlife Refuge boundary to Tide Creek, including a Trailhead
- Phase III** - Surf Community
- Phase IV** - National Wildlife Refuge
- Phase V** - US 319 to National Wildlife Refuge boundary including a Trailhead



Proposed Trailhead within Phase.  
Locations to be determined

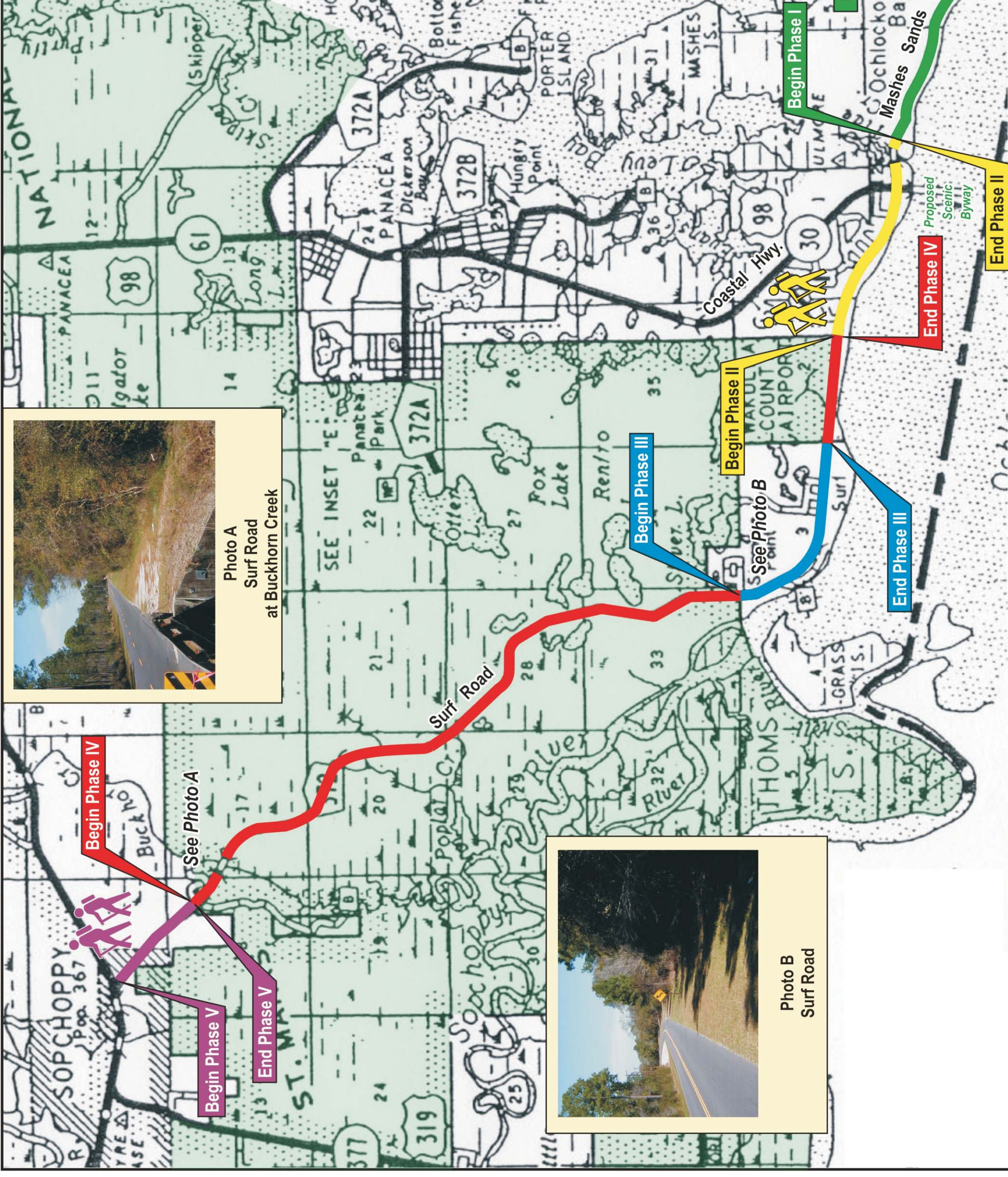
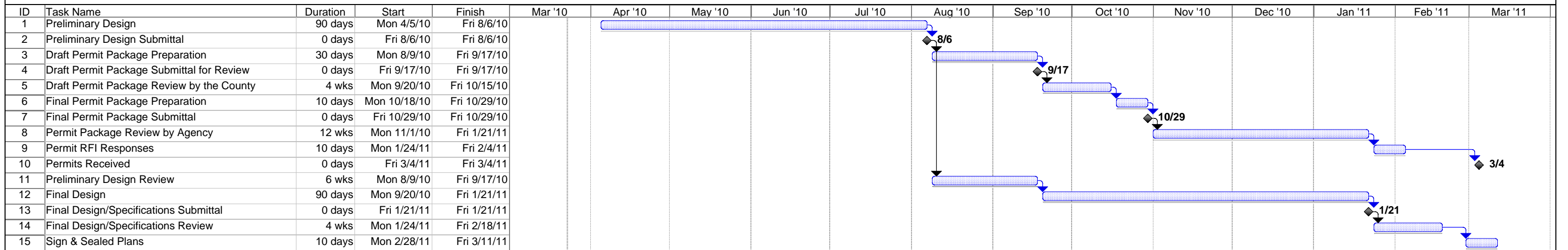


Photo A  
Surf Road  
at Buckhorn Creek



Photo B  
Surf Road

## EXHIBIT A Ochlockonee Bay Bike Trail, Phase I Wakulla County



Project: OBBT Phase I Project Schedt  
Date: Tue 3/23/10

|       |  |           |  |                 |  |                    |  |          |  |
|-------|--|-----------|--|-----------------|--|--------------------|--|----------|--|
| Task  |  | Progress  |  | Summary         |  | External Tasks     |  | Deadline |  |
| Split |  | Milestone |  | Project Summary |  | External Milestone |  |          |  |